



卓越品质 · 源于专业
Excellent Quality From Speciality

● **插桶泵**

Drum pump

● **浆料泵**

Slurry pump

● **抽液泵**

Liquid pump

● **直流加油泵**

DC gasoline pump



重要

操作人员在使用插桶泵产品前，
请务必仔细阅读本说明，以确
保操作安全。请详阅本说明内
容并妥善保管

上海新光明泵业制造有限公司
Shanghai xingguangming PumpManufacturing Co.,Ltd.

插桶泵系列

Drum Pump Series

卓越品质 源于专业
Excellent Quality From Speciality



目录

Contents

一、插桶泵

二、气动插桶泵

三、气动浆料泵

四、直流加油泵



插桶泵系列

Drum Pump Series

卓越品质 源于专业 From Speciality



简介 Introduction

插桶泵为轻便型管式轴流泵，广泛适用于各个事业厂矿单位输送和抽吸桶装容器中各种液体。本插桶泵具有结构紧凑、性能稳定、操作简单、维护方便等特点。可以直接插入物料桶（最大适用于GB/325/1991标准的钢桶、塑料桶等）中输送液体，方便省力，效率高。根据输送介质粘度、比重、腐蚀性程度不同所配置泵体材质和电机各有不同。防爆型插桶泵适用于隔爆能力达II B级，引燃温度不低于T4组的易燃易爆作业场所，在使用防爆型插桶泵时应严格按照GB3836.1-2《爆炸性环境用防爆电气设备》有关规定并正确使用防爆插头插座。防爆型产品符合国际GB3836.1-83《爆炸性环境用防爆电气设备通用要求》和GB3836.2-83《爆炸性环境用防爆电气设备隔爆型电气设备“d”》及GB3883.1-83《手持式电动工具的安全》的规定。并通过国家防爆电气产品质量监督检测中心严格检测，获得防爆检验合格证。

操作条件：

插桶泵可以输送各类液体，由于液体多样性，选型必须考虑液体和泵管材质及密封材质的相容性。

如需输送食品、药品等有卫生要求的场合，使用者需要确认不会危害相关食品、药品的品质。

材质使用温度：PP≤50℃、PTFE≤160℃、SS≤110℃、AL≤110℃。

电机使用环境温度：-20℃-40℃。

如需使用有粘度液体可选用高速电机，可输送最大粘度2000CPS的液体。低速电机输送液体最高粘度50CPS。如需输送高粘度液体可以选用气动浆料泵。

输送有粘度液体时，插桶泵的输送流量和扬程会有所下降，超过额定输送粘度，电机有过载危险，严重时损坏电机。

高速插桶泵可以输送最高比重1.8。

输送液体含有颗粒必须安装过滤器，否则会损坏轴和滑动轴泵。

The drum pump is a portable, tube-type axial flow pump, which is widely applicable for institutions, factories and mines to transport and pump liquids in drummed containers. It's characterized by its compact structure, stable performance, simple operation, user-friendly maintenance, etc. It can be inserted into material drums directly (applicable for steel and plastic drums among others as per GB/325/1991 at most) to transport liquids, being easy, labor-saving and high-efficiency. It's provided with different pump body materials and motors, subject to the working medium's viscosity, specific gravity and corrosion degree. The explosion-proof drum pump is applicable for inflammable and explosive working environments with a flameproof level up to II B and an ignition temperature not less than Group T4. In using the explosion-proof drum pump, it's necessary to follow relevant provisions in GB3836.1-2: Electrical Apparatus for Explosive Atmospheres strictly and use explosion-proof plugs and sockets correctly. The explosion-proof product conforms to provisions in GB3836.1-83: Electrical Apparatus for Explosive Atmospheres - General Requirements, GB3836.2-83: Electrical Apparatus for Explosive Atmospheres - Flameproof Electrical Apparatus "d", and GB3883.1-83: Safety of Hand-held Motor-operated Electric Tools. It passed strict tests of China National Quality Supervision and Test Center for Explosion Protected Electrical Products, granted with a certificate of passing explosion-proof tests.

Operational conditions:

The drum pump can transport different kinds of liquids, and because of diversity of liquids, it's necessary to take account of compatibility between liquids and materials of pump pipes and sealing in type selection.

To transport food, drugs or others with sanitary requirements, users shall confirm that the pump will not do harm to quality of relevant food or drugs.

Working temperature of materials: PP≤50℃; PTFE≤160℃; SS≤110℃; AL≤110℃.

Working ambient temperature of motor: -20℃-40℃.

To use viscous liquids, a high-speed motor is optional to transport liquids with the maximum viscosity up to 2,000CPS. With a slow-speed motor, the pump can transport liquids with the maximum viscosity up to 50CPS. When transporting high-viscosity liquids, a pneumatic slurry pump is optional.

When transporting viscous liquids, the drum pump's transportation flow and lift head may fall, and when beyond the rated transportation viscosity, the motor may face a danger of overload or even be damaged in a serious case.

A high-speed drum pump can transport liquids with the maximum specific gravity up to 1.8.

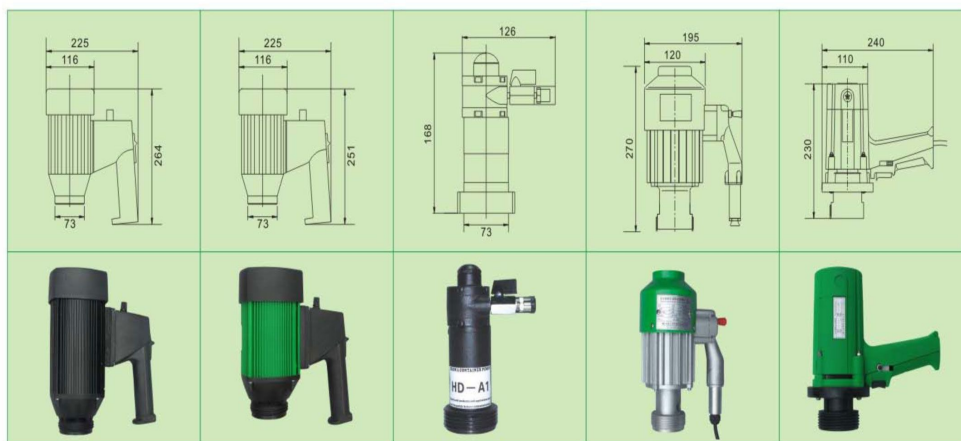
If the transported liquid contains grains, a filter must be mounted, or else the shaft and the sliding shaft pump may be damaged.

插桶泵系列

Drum Pump Series

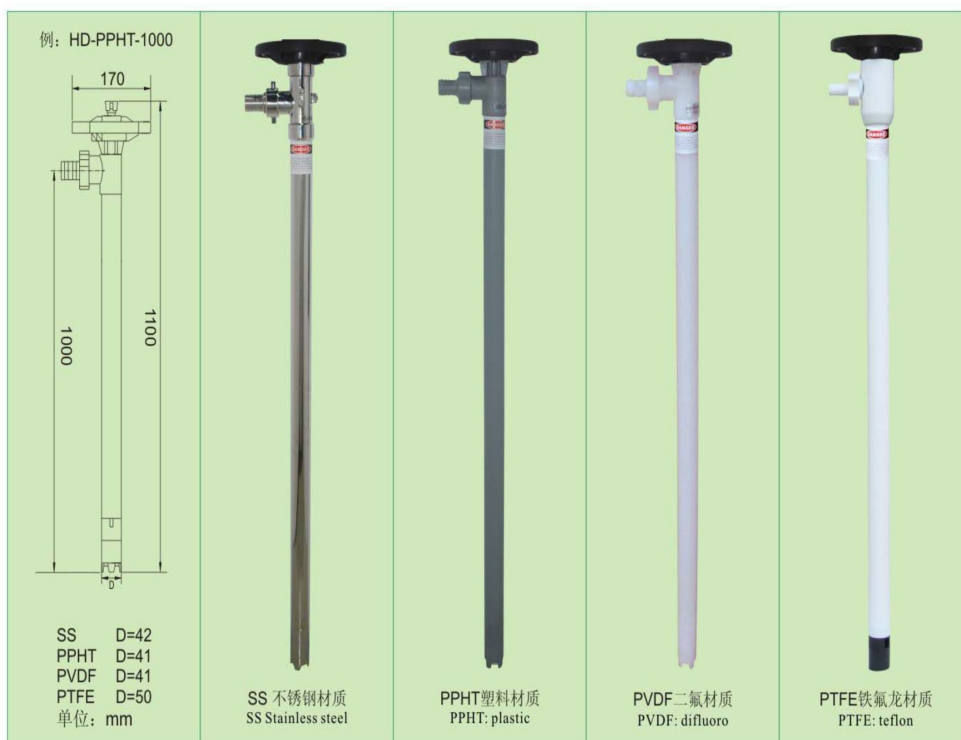
卓越品质 源于专业

Excellent Quality From Speciality



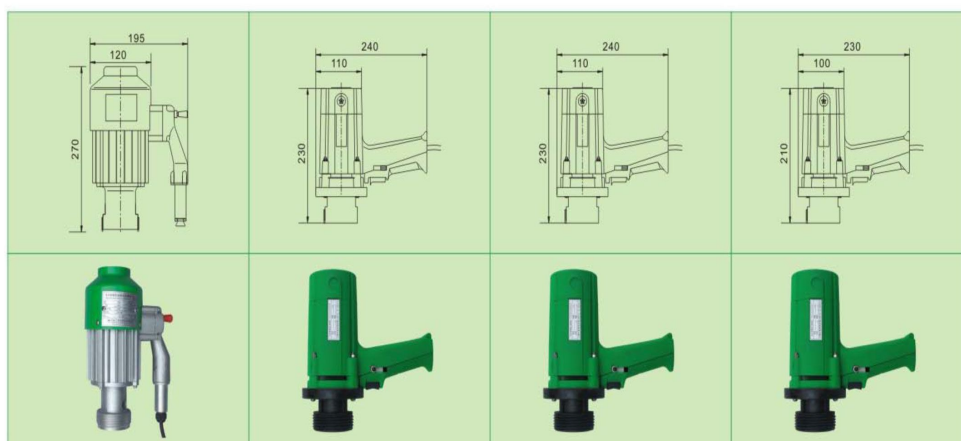
HD调速电机及气动马达HD Variable Speed Control Pneumatic Motor

型号 Model	电压 Voltage	转速 Speed	频率 Hertz	功率 Power
HD-EX2-V	1 ϕ 220V	0~10000	50~60Hz	825W
HD-E2-V	1 ϕ 220V	0~10000	50~60Hz	825W
HD-A1		0~10000	3~7 bar	375W
HD-EX2-V(ZD-A)	1 ϕ 220V	12000	50~60Hz	900W
ZD-1100W	1 ϕ 220V	10000	50~60Hz	1100W



插桶泵系列 Drum Pump Series

卓越品质 源于专业
Excellent Quality From Specialty



ZA电机 ZA Motor

型号 Model	电压 Voltage	转速 Speed	频率 Hertz	功率 Power
ZD-A	1 Φ 220V	12000	50-60Hz	900W
ZD-1100W	1 Φ 220V	10000	50-60Hz	1100W
ZD-750W	1 Φ 220V	10000	50-60Hz	750W
ZD-550W	1 Φ 220V	8000	50-60Hz	550W



插桶泵系列

Drum Pump Series

卓越品质 源于专业

Excellent Quality From Speciality



YBYB-40



YBYB-40P



YBYB-60



YBYB-60P



ZDY-1



ZDY-2



ZDY-3



ZDY-4

插桶泵系列

Drum Pump Series

卓越品质 源于专业



主要性能参数 Main Performance Parameters

型号 Type	进出口径 mm	功率 W	流量 L/min	扬程 m	密封材料 Sealing material	材质 Material	配套电机 Related motor
ZD-A	50/32	900	150	10	氟橡胶 Fluorine rubber	304/316L不锈钢 304/316L stainless steel	防爆型 Explosion-proof type
ZD-A-W	50/32	900	120	10	无轴封 Without shaft seal	304/316L不锈钢 304/316L stainless steel	
ZD-A-G	50/32	900	100	20	无轴封 Without shaft seal	304/316L不锈钢 304/316L stainless steel	
ZD-A-W-II	42/25	900	100	7	氟橡胶/无轴封 Fluorine rubber / Without shaft seal	304不锈钢 304 stainless steel	
ZD-B	50/32	900	150	10	丁晴橡胶 NBR	铝合金 Aluminium alloy	
ZD-C	42/25	900	120	10	无轴封 Without shaft seal	RPP工程塑料 RPP engineering plastics	
ZD-1	50/32	750	120	7	氟橡胶 Fluorine rubber	304/316L不锈钢 304/316L stainless steel	普通型 Common type
ZD-2	50/32	750	120	7	丁晴橡胶 NBR	铝合金 Aluminium alloy	
ZD-3	42/25	550	100	7	氟橡胶 Fluorine rubber	304/316L不锈钢 304/316L stainless steel	
ZD-4	42/25	550	100	7	丁晴橡胶 NBR	铝合金 Aluminium alloy	
ZD-5	50/32	1100	150	10	氟橡胶 Fluorine rubber	304/316L不锈钢 304/316L stainless steel	
ZD-5-W	50/32	1100	120	10	无轴封 Without shaft seal	304/316L不锈钢 304/316L stainless steel	
ZD-5-G	50/32	1100	100	20	无轴封 Without shaft seal	304/316L不锈钢 304/316L stainless steel	
ZD-6	50/32	1100	150	10	丁晴橡胶 NBR	铝合金 Aluminium alloy	
ZD-7	42/25	1100	100	7	丁晴橡胶 NBR	铝合金 Aluminium alloy	
ZD-8	42/25	750	120	10	无轴封 Without shaft seal	RPP工程塑料 RPP engineering plastics	
HD-SS304	42/25	825	130/60	10/20	无轴封 Without shaft seal	304不锈钢 304 stainless steel	可调速 普通电机 Speed adjustable common motor
HD-SS316	42/25	825	130/60	10/20	无轴封 Without shaft seal	316L不锈钢 316L stainless steel	
HD-PP	42/25	825	130/60	10/20	无轴封 Without shaft seal	PP工程塑料 PP engineering plastics	
HD-PVDF	42/25	825	130/60	10/20	无轴封 Without shaft seal	聚偏二氟乙烯	
HD-SS304-Ex	42/25	825	130/60	10/20	无轴封 Without shaft seal	304不锈钢 304 stainless steel	可调速 防爆电机 Speed adjustable explosion-proof motor
HD-SS316-Ex	42/25	825	130/60	10/20	无轴封 Without shaft seal	316L不锈钢 316L stainless steel	
HD-PP-Ex	42/25	825	130/60	10/20	无轴封 Without shaft seal	PP工程塑料 PP engineering plastics	
HD-PVDF-Ex	42/25	825	130/60	10/20	无轴封 Without shaft seal	聚偏二氟乙烯	
ZDY-1	53/20	120	40	3	丁晴橡胶 NBR	铝合金 Aluminium alloy	普通型 Common type
ZDY-2	53/20	120	40	3	氟橡胶/四氟 Fluorine rubber / PTFE	304/316L不锈钢 304/316L stainless steel	
ZDY-3	53/20	180	60	7	丁晴橡胶 NBR	铝合金 Aluminium alloy	
ZDY-4	53/20	180	60	7	氟橡胶/四氟 Fluorine rubber / PTFE	304/316L不锈钢 304/316L stainless steel	
YBYB-40L	53/20	120	40	3	丁晴橡胶 NBR	铝合金 Aluminium alloy	防爆型 Explosion-proof type
YBYB-40P	53/20	120	40	3	氟橡胶/四氟 Fluorine rubber / PTFE	304/316L不锈钢 304/316L stainless steel	
YBYB-60L	53/20	180	60	7	丁晴橡胶 NBR	铝合金 Aluminium alloy	
YBYB-60P	53/20	180	60	7	氟橡胶/四氟 Fluorine rubber / PTFE	304/316L不锈钢 304/316L stainless steel	
ZDY-1-II	53/20	160	40	3	丁晴橡胶 NBR	铝合金 Aluminium alloy	12V/24V
ZDY-2-II	53/20	160	40	3	氟橡胶/四氟 Fluorine rubber / PTFE	304/316L不锈钢 304/316L stainless steel	



插桶泵材质应用范围 MATERIAL APPLICATION SCOPE OF DRUM PUMP

泵浦材质 Pump material	最高耐温 Max.Temp.	应用范围 Application scope	
PPHT (玻纤增强聚丙烯) (Fiberglass reinforced PP)	80°C/175°F	酸性和碱性物质如：醋酸、铵、氯化铁、氟主酸、氢氧化物、消毒剂、磷酸(45%)、氮酸(20%)、钠氢氧化物、硫磺酸(75%)、漂白水及其它液体。 Acid and alkaline substances, like acetic acid, ammonium, iron chloride, fluosilicic acid, hydroxide, disinfectors, phosphoric acid (45%), nitric acid (20%), sodium hydroxide, sulfuric acid (75%), bleaching water and other liquids.	<ul style="list-style-type: none"> • Acetic Acid • Sulfuric Acid • Hydrochloric-20% • Nitric Acid-20% • Alkalies • Ferric Chloride
PVDF	100°C/212°F	高腐蚀性毒性物质如：氢氟酸(浓度COLD)、氨酸(浓缩)、丙酸、硬脂酸、硫磺酸及其它溶液。 Highly corrosive and toxic substances, like hydrofluoric acid (concentration COLD), propylhomoserin (concentrated), propanoic acid, stearic acid, sulfuric acid and other solutions.	<ul style="list-style-type: none"> • Concentrated Nitric Acid • Sulfuric Acid-66 Baume • Sodium Hypochlorite • Propionic Acid • Stearic Acid • Hydrofluoric Acid
PTFE	110°C/230°F	任意浓度的硫酸、盐酸、磷酸、氢氟酸、氢氧化钠、氢氧化钾、铬酸、王水、甲酸、醋酸、丙酸、丁酸、硝酸、甲烷、乙烷及各种苯、醇、醚、丙酮、环己酮、酯类、氟乙烯。 Any concentration of sulphuric acid, hydrochloric acid, phosphoric acid, hydrofluoric acid, sodium hydroxide, potassium hydroxide, chromic acid, aqua regia, methanoic acid, acetic acid, propanoic acid, butyric acid, nitric acid, methane, ethane and different kinds of benzene, alcohol, ether, acetone, cyclohexanone, esters and vinyl fluoride.	<ul style="list-style-type: none"> • Sulfuric acid • Hydrochloric acid • Phosphoric acid • Hydrofluoric acid • Sodium hydroxide • Chromic acid • Aqua regia • Formic acid • Methane • Benzene • Alcohol • Acetone • Ester
SS304	100°C/212°F	可燃性物质或易燃性物质柴油、汽油、各种油类、和缓剂(界面活性剂)、酒精。 Flammable or inflammable substances, diesel oil, gasoline, all kinds of oil, inhibiting agents (interfacial active agents) and alcohol.	<ul style="list-style-type: none"> • Alcohol • Gasoline • Aqueous Ammonia • Isopropyl Ether • Solvents • Petroleum Products
SS316L	100°C/212°F	可燃性物质或易燃性物质柴油、汽油、各种油类、和缓剂(界面活性剂)、酒精。 各种食品类、饮料类、医用类、高纯净度轻质流体 Flammable or inflammable substances, diesel oil, gasoline, all kinds of oil, inhibiting agents (interfacial active agents) and alcohol. All kinds of food, beverage, medicine and high-purity light-duty fluids.	<ul style="list-style-type: none"> • Alcohol • Gasoline • Aqueous Ammonia • Isopropyl Ether • Solvents • Petroleum Products
AL	100°C/212°F	低腐蚀性的污水、柴油、低粘度油、润滑油 Weakly corrosive sewage, diesel oil, low-viscosity oil and lubricating oil	<ul style="list-style-type: none"> • Sewage • Diesel oil • Low viscosity oil • Lubricating oil



输送液体如为溶剂时，必须采用防爆电机或气动马达，同时接上接地线，以确保使用之安全。

If the service is solvent, it's necessary to adopt an explosion-proof or pneumatic motor and meanwhile connect the ground wire to ensure safe use.

插桶泵系列

Drum Pump Series

卓越品质 Excellent Quality
源于专业 From Speciality



订货前应注意事项/到货检查 NOTES BEFORE ORDER/ARRIVAL CHECK

订购插桶泵应注意事项

- 一、插桶泵依不同材质有不同的条件及应用范围，订购插桶泵前应考虑以下因素：1.液体化学特性(PUMP泵体及主轴材质耐抗性)，2.流量(l/min)，3.扬程(m)4.温度(°C)，5.粘度(cps)，6.通过粒径(mm)，7.比重(kg/m³)
- 二、确认使用电源、接管方式及相关作业环境。
- 三、出口可选择标准配备1"(25.4mm)或特殊规格3/4"(22mm)，1 1/4"(32mm)

货到检查

- 一、请检查铭牌，确认是否为您所订购之插桶泵。
- 二、请检查电机(或气动马达)、泵管有无任何损坏及异常情况。
- 三、请确定电机及插桶泵所有螺丝、零件是否皆已锁紧、固定。

使用前准备

- 1、检查泵管：各连接部位没有松动，转动联轴器泵轴可以灵活转动。
- 2、检查电机：检查电源线完整，开关状态良好，可以先通电空转一下电机，检查是否正常，切勿将手伸入电机输出轴端。但应避免长时间空转电机。
- 3、安装联轴器弹性块到泵管联轴器上。
- 4、观察电机端联轴器位置，对准泵管联轴器，把泵管插入电机快速接口，确定泵管头部完全插入快速接口。
- 5、电机和泵管的位置可以360度调整，安装时把泵管出口调整到适合使用的位置后锁紧螺母即完成安装。建议让泵出口远离电机电源线。
- 6、把连接好电机的桶泵放入输送的桶或容器中，为了保证桶泵在桶或容器中的位置，需要使用桶口固定器或类似措施固定好桶泵。（详见插桶泵安装示意图）
- 7、安装出口管：出口管路可以根据实际需要安装塑料软管或金属管，出口管路较长时出口必须有支撑，不能由桶泵来承受管路的重量，以免泵管变形或拉倒桶或容器。非金属管出口螺纹不能直接配接金属螺纹管，以免损坏出口。
- 8、检查电机开关处于关闭状态，接通电源即完成安装。

NOTES FOR ORDERING PUMP

- I. The liquid pumps have different conditions and application scopes in accordance with different materials, and the following factors shall be taken into consideration before ordering liquid pumps. 1. The liquid's chemical properties (resistance of materials of the pump's body and main shaft); 2. flow (l/min); 3. lift head (m); 4. temperature (°C); 5. viscosity (cps); 6. diameter of passing grain (mm); 7. specific gravity (kg/m³)
- II. Confirm working power supply, pipe connection mode and relevant working environment.
- III. The outlet is optional for the standard size 1" (25.4mm) or special sizes 3/4" (22mm) and 1 1/4" (32mm)

ARRIVAL CHECK

- I. Please check the nameplate to confirm whether it's the pump that you've ordered.
- II. Please check whether the motor (or pneumatic motor) and the pump pipe have any damages or abnormalities.
- III. Please confirm whether all screws and parts of the motor and the liquid pump have been locked and fixed.

PREPARATIONS BEFORE USE

1. Check the pump pipe: all connecting parts are not loose, and the pump shaft can rotate flexibly when turning the coupling.
2. Check the motor: check that the power lead is intact and the on-off state is good; you can power on the motor and make it idle to check whether it's normal; never put your hand into the motor's output shaft end; but don't make the motor idle for too long.
3. Mount the coupling's elastic block on the pump pipe coupling.
4. Observe the coupling's position at the motor end, align the pump pipe coupling, insert the pump pipe into the motor's fast interface and make sure that the pump pipe head is inserted into the fast interface completely.
5. The motor's and pump pipe's positions can be adjusted within 360. In installation, adjust the pump pipe outlet to an appropriate position for use and lock the nut to finish installation. It's recommended to keep the pump outlet far away from the motor's power lead.
6. Put the drum pump, with the motor connected, into the transportation drum or container. To ensure the drum pump's position in the drum or container, it's necessary to use a drum mouth fixer or a similar measure to fix the drum pump (see the drum pump's installation diagram for details).
7. Mount the outlet pipe: for the outlet pipeline, a plastic hose or a metal pipe, subject to actual demand, can be mounted; when the outlet pipeline is long, the outlet must be provided with a support and its weight cannot be borne by the drum pump lest the pump pipe is deformed or the drum or container is pulled down. A non-metallic pipe outlet thread cannot be connected to a metal thread pipe directly lest the outlet is damaged.
8. Check that the motor switch is in the off state, and power on to finish installation.

插桶泵系列

Drum Pump Series

卓越品质 源于专业
Excellent Quality From Speciality



操作说明及注意事项 OPERATING INSTRUCTIONS AND NOTES

- 一、请先检查扶手轮及出口管路是否锁紧。
- 二、叶轮容许通颗粒3mm以下之软性物质，若超过此粒径请另行加装过滤网。
- 三、泵机勿存放在潮湿或酸气、热气及各种腐蚀性气体过重处。
- 四、电机、气动马达及插桶泵严禁碰撞损坏。
- 五、HD-A系列气动马达机型，运行中必须加装带自动添油型气动三联件(除水过滤、润滑、压力调整)。
注：润滑油采用ISO VG32涡轮机油(俗称1#透平油)
- 六、请将插桶泵管及出口管路放至指定安全区域后再开启电(气)源。
- 七、使用电(气)源时，请由小到大启动，以延长泵机运转时间及寿命，亦防止人员危险。
- 八、注意电压是否正确或供气压力和产气量是否满足。
- 九、调速电机均有过载保护装置。(其它泵型建议在电源进线端加设过载保护器)
- 十、使用时，必须有专业人员现场操作，运行过程中人员切勿离开现场。
- 十一、一般桶装手提式插桶泵可抽取之粘度约为800cps；高扬程叶轮粘度可达1000cps，如需输送更高粘度液体，请选用高粘度螺旋式插桶泵或是其它适用插桶泵（例：FY气动浆料泵、RW气动隔膜泵、ZB转子泵、CG螺杆泵）。
- 十二、如发现泵机有异响时，请检查是否吸入异物与叶轮碰撞。
- 十三、输送液体如为溶剂时，需采用防爆型电机或气动马达，同时接上接地线，以确保使用上安全。
- 十四、电机或气动马达与泵管安装时请确实，如安装不当，会造成电机马达联轴器与泵管联轴器损坏。
- 十五、电机或气动马达与泵管安装前，请先确认开关为关闭OFF状态。
- 十六、电机或气动马达请勿浸入液体中或泼到液体。
- 十七、插桶泵应在海拔1000米以下使用。

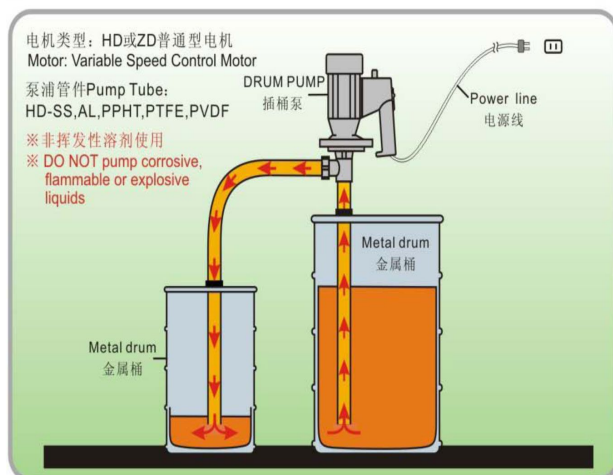
- I. Please check first whether the handwheel and the outlet pipeline are locked.
- II. The impeller allows passing of soft substances with diameter below 3mm, and if beyond that diameter, please mount a filter screen additionally.
- III. Don't store the pump in any place with excessive moisture or acid, hot or corrosive gases.
- IV. It's strictly prohibited to knock and damage the motor, the pneumatic motor and the drum pump.
- V. HD-A series pneumatic motor type in HD-A series must be mounted additionally with an automatic pneumatic oiling triplex (water removal and filtration, lubrication and pressure regulation). Note: the lubricating oil adopts ISO VG32 turbine oil (informally called 1# turbine oil)
- VI. Please place the liquid pump pipe and the outlet pipeline in a designated safe area before starting the power (gas) supply.
- VII. When using the power (gas) supply, please start it gradually to extend the pump's service time and life and also protect personnel from dangers.
- VIII. Note whether the voltage is accurate or whether the supply gas pressure and the gas production are met.
- IX. All speed control motors are provided with an overload protector (for other pump types, it's recommended to mount an overload protector additionally at the power lead end).
- X. Professionals must be available for its field operation and during its running they shall by no means leave the field.
- XI. A common drum portable liquid pump can pump liquids with viscosity about 800cps; and up to 1,000cps for a high-lift impeller; if required to transport liquids with higher viscosity, please choose a high-viscosity spiral liquid pump or other applicable liquid pumps (such as: FY pneumatic slurry pump, RW pneumatic diaphragm pump, ZB rotor pump and CG screw pump).
- XII. If any abnormal noise of the pump is found, please check whether foreign matters are pumped inside to knock against the impeller.
- XIII. If the working liquid is a solvent, it's necessary to adopt an explosion-proof or pneumatic motor and meanwhile connect the ground wire to ensure safe use.
- XIV. Please make sure the electric or pneumatic motor is installed on the pump pipe well because improper installation may result in damages to the couplings of the motor and the pump pipe.
- XV. Before installing the electric or pneumatic motor on the pump pipe, please confirm first that the switch is off.
- XVI. Please don't immerse the electric or pneumatic motor into liquids or splash liquids on it.
- XVII. pump shall be used at an elevation below 1,000m.

插桶泵系列 Drum Pump Series

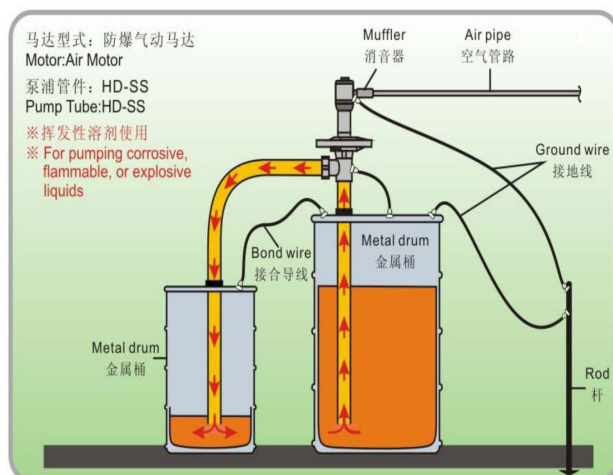
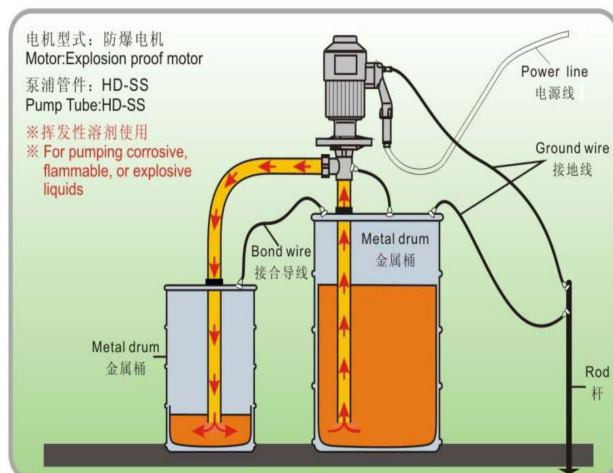
卓越品质 源于专业
Excellent Quality From Specialty



插桶泵安装示意图 DRUM PUMP SUGGESTED INSTALLATION



输送液体如为溶剂等挥发性易燃易爆介质, 需配置防爆电机或防爆气动马达, 同时必须接上接地线, 以确保使用上安全; 如疏忽接地线时, 可能会导致静电而造成火灾、伤害甚至死亡。如果仍有疑问, 使用前请先洽生产商或经销商。



For safety, please properly bond and ground when handling solvent or flammable fluids as a static electric discharge could result in fire, explosion, injury or death. Do not start the pump in case of any doubt, and contact with local distributor.

插桶泵系列 Drum Pump Series

卓越品质 源于专业
Excellent Quality From Speciality



优点及特性说明 FEATURES

标准的设计

Compact Design

可快速、容易连接交换所有马达和泵
Fast strip down for quick change of motor and pump

安全性联轴器

Safety Coupling

有效防止主轴卡死，造成马达损坏
Effectively prevent shaft got stuck to cause motor damage

三通泵头轴承座

T Type pump head bearing

PPHT\PVDF\SUS316L\304\PTFE\AL

安全性插管式出液口

Safety bayonet-tube outlet

锯齿状束节设计不易滑落
可安全及有效的移动(拔出)外接管
Spiral design for safe and quick change of fittings

主轴

High quality shaft

AL、SS 系列: SUS316L
PPHT、PVDF、PTFE系列: Hastelloy

套管TEF®

TEF Sleeve

被固定于内管内，可确保稳定性及可适当调整
Being fixed in tube to ensure stability and adjustability

叶轮KYANR®PVDF

High perfcenace impeler

有效提升泵浦输送量
坚固结构增加耐磨性
Robust construction to improve capacity and abrasion resistance.
Efficiently improve the delivery capacity, firm in structure for better abrasion resistance

高性能轴承组

High performance Bearing Sets

可降低马达输送动力对耗损提升泵浦性能
To reduce power consumption for better performance
不锈钢材质防酸氯腐蚀耐高温
Stainless steel for acid chloride corrosion resistance and high temperature application.

生产商注册商标凸铸LOGO设计确保产品纯正。

The logo of the manufacturer's registered trademark ensures authenticity of products.

快拆式螺牙设计(管轴套座)

Threaded Design (Carbon brush housing)

不需任何工具即可轻松维修保养可快速更换叶片泵浦外壳、精确调整更换之零件。
Easy maintenance without any additional tools required.Quick change of impeller and housing.

轴套

Shaft Bushing

耐酸碱铁氟龙材质
Rulon® not only for better acid and alk resistance, but also high wear resistance and low friction.



各种叶片式抽液泵皆采用无轴封设计，可耐空转30分钟以上。
All vane drum pumps are of none-shaft seal design, which allows blank run up to 30 minutes.

插桶泵系列

Drum Pump Series

卓越品质 源于专业
Excellent Quality From Speciality

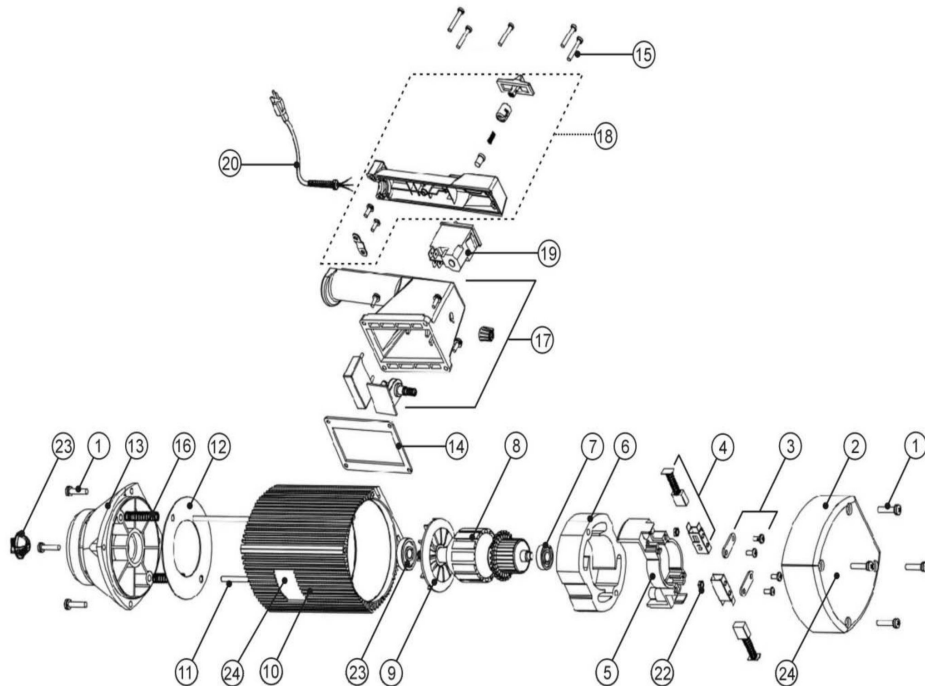


HD可调速电机系列 HD VARIABLE SPEED CONTROL MOTOR SERIES

型号 Model	电源 Power
HD	220V/1 ϕ /50-60Hz/825W

电机重量(Weight):3.55kg

不适用于输送易燃易爆介质及场合。Do Not Pump Flammable or Explosive Fluids.

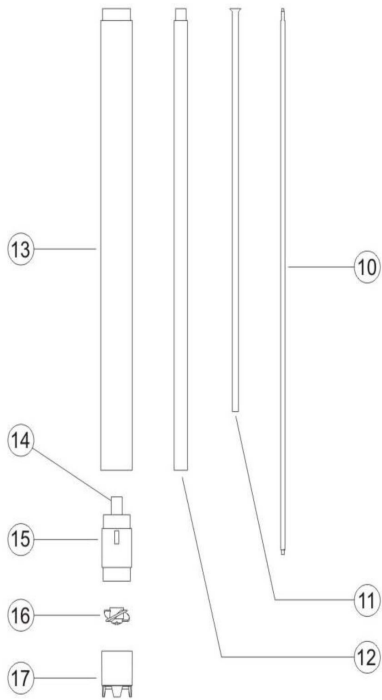
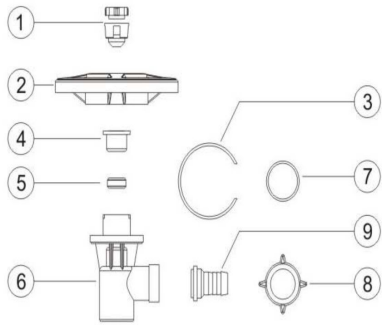


序号 No.	部件名称 Name
01	上盖/下端盖螺丝 Screw for plastic housing
02	电机上盖 Motor cover
03	十字自攻螺丝组件 Cross screw with gasket
04	碳刷组件 Carbon brush
05	碳刷架座 Brush holder
06	外线圈组 Stator
07	轴承 Ball bearing
08	内线圈组 Armature
09	散热风叶 Fan
10	电机外壳 Motor housing,plastic
11	连接杆 Rod connector
12	下端盖垫片 Guide disc

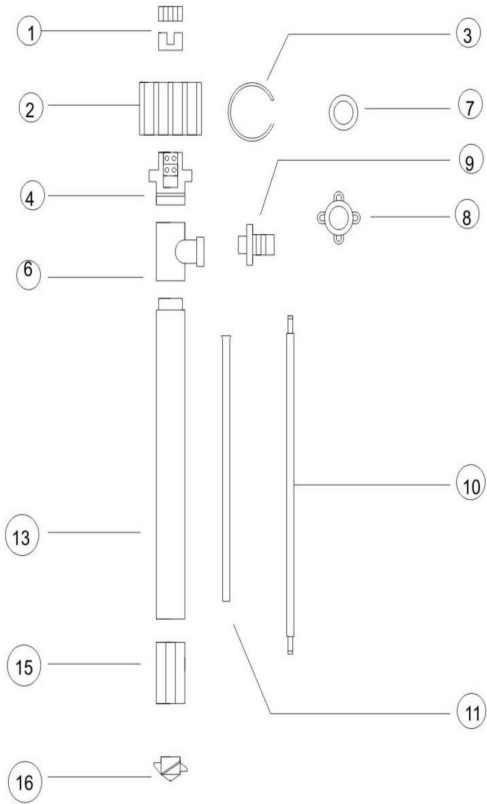
序号 No.	部件名称 Name
13	电机下端盖 Lower housing
14	把手垫片 Gasket
15	把手螺丝 Screw
16	弹簧 Spring
17	调速开关 Speed-control switch
18	把手上盖(推杆) Switch cover
19	电源开关 Power
20	电源线 Power cord w/strain relief&plug (含插头)
21	轴承 Bearing
22	六角螺母 Hexagon nut
23	电机端联轴器 Motor coupling
24	品牌标识 Nameplate



HD插桶泵系列 HD DRUM PUMP SERIES



ZD插桶泵系列 ZD DRUM PUMP SERIES



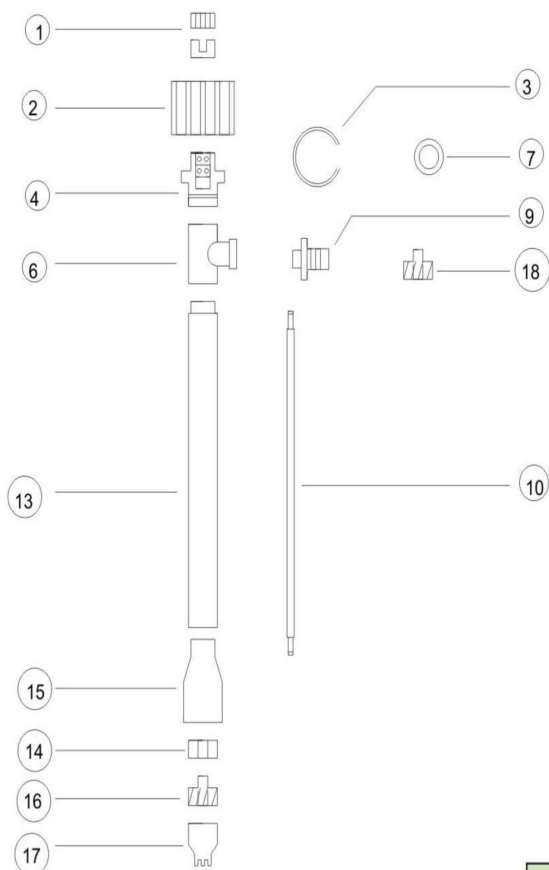
插桶泵系列

Drum Pump Series

卓越品质 Excellent Quality
源于专业 From Speciality



YBYB、ZDY插桶泵系列 YBYB,ZDY DRUM PUMP SERIES



序号 No.	部件名称 Name
01	泵联轴器 Pump coupling
02	扶手轮 Hand wheel
03	卡环 Snap ring
04	轴承组 Bearing unit assembled-2
05	V型油封 V-Seal-VT
06	三通泵头座 Connection flange
07	出液口垫片 TEL seal
08	出液口锁母 Wing nut
09	出液口管芯 Hose barb,1"
10	中心轴 Drive shaft
11	轴套管 Guide sleeve
12	内管 Inner tube
13	外管 Outer tube
14	轴套 Pure carbon brush
15	管轴套座 Carbon brush housing
16	叶轮（开式） PTFE impeller
	高扬程叶轮 High pressure impeller
17	底座 Pump foot
	高扬程泵底座 High pressure pump foot
18	上叶轮

故障排除

故障情形	故障可能原因	故障排除
电机/气动马达停止运动	<ul style="list-style-type: none"> • 电机电流过载(电机线圈烧毁, 无法动作) • 电源是否断路或插头是否脱落 • 马达上下联轴器磨损 • 定子内线圈遭酸气腐蚀, 导致无法动作 • 电源接触不良 • 电源的保护开关接触不良 	<ul style="list-style-type: none"> • 进线端加装过载保护器(更换线圈) • 检查电源或重新稳固插头、插座 • 更换联轴器 • 更换内线圈 • 更换插头或插座确保稳固连接 • 检修开关或者更换
电机/气动马达温度太高	<ul style="list-style-type: none"> • 电流是否太高, 使电机超载使用 • 电机用电压不稳定, 请加装稳压器或过电流保护开关以防电机过载烧掉 • 液体粘度太高, 比重过大, 颗粒过大含量过高导致电机运转变慢、重拖 	<ul style="list-style-type: none"> • 查明超载原因, 请加装电源稳压器及电流过载保护开关 • 稀释被输送介质的浓度、粘度、比重、颗粒或更换适用的其它泵型
正常运转后, 插桶泵突然停止运动	<ul style="list-style-type: none"> • 是否阻塞或污垢沉积 • 请清除阻塞物或污垢, 并确实定期检查 • 是否有异物进入泵浦本体, 是否为过滤设备不良或桶槽内掉入其它物质 • 确认液体温度是否过高、材质是否适用 	<ul style="list-style-type: none"> • 清除阻塞物、清理污垢或沉积物 • 请更换滤网、滤芯并清除管路及槽内杂质 • 降低被输送液体的温度或更换满足和适用被输送液体的材质之泵型
插桶泵主体有裂痕	<ul style="list-style-type: none"> • 确认泵体过流材质和被输送液体是否适用 • 出入口管路未确实固定, 造成运转时产生震动; 请将出入口管路固定妥当 • 并将损坏部份换新 	<ul style="list-style-type: none"> • 更换能够完全满足或适应被输送液体材质的泵型 • 稳固插桶泵使用时的支撑, 尽量减少振幅及不必要的震动
插桶泵无法打出液体 (电机可正常运转情况下)	<ul style="list-style-type: none"> • 检查出入口管路是否异物阻塞或污垢沉积 • 检查叶片是否异物阻塞、磨损、卡死 • 入口液体水位应高于泵底座约需3公分以上 • 检查插桶泵零件是否紧脱、损坏 • 电机联轴器、泵管联轴器是否磨损、导致空转 • 确认电机是否正常运转 	<ul style="list-style-type: none"> • 清除插桶泵入口处阻塞物及污垢 • 清除叶轮上的缠绕物等异物、叶轮如损坏则更换 • 提高液位 • 检测并上紧叶轮、联轴器、轴套等, 如部件已损坏则更换 • 更换联轴器 • 检测接线是否完全正确、碳刷长度是否合格
插桶泵工作时振动大、声音大	<ul style="list-style-type: none"> • 插桶泵未确实固定或安装不良, 使运转时产生震动 • 检查出入口管路是否有异物阻塞或污垢沉积 • 插桶泵长期运转后, 轴承磨损或锈蚀 • 碳刷长期使用磨损 	<ul style="list-style-type: none"> • 稳固插桶泵使用时的支撑, 检查主轴和轴套间的间隙是否过大, 被输送液体的粘度或比重超出泵的应用范围 • 更换轴承、轴套、套管 • 更换碳刷甚至碳刷架
插桶泵管件漏液	<ul style="list-style-type: none"> • 中间套管, 管轴承座磨损 • 中心轴因长期使用导致磨损 • 出液口漏液时, 可能为O型环磨损 • 泵管松脱 • 电机联轴器与泵管联轴器损毁 	<ul style="list-style-type: none"> • 更换中间套管或管轴承座 • 更换中心轴、轴套及配套密封件 • 更换O型密封环 • 旋紧泵管(有必要可以加高强度密封胶) • 更换联轴器、检测相联部分
气动马达故障	<ul style="list-style-type: none"> • 气源尚未开启 • 气动马达转速过低, 满载时运行不稳 • 过载引发叶片损坏, 长期使用导致叶片磨损 	<ul style="list-style-type: none"> • 开启气源 • 气压不够, 提高供气压力, 提高供气量 • 更换叶片或更换气动马达



如遇不明故障原因时, 请立即并闭电源(气源), 并通知经销商作进一步检查。

插桶泵系列

Drum Pump Series

卓越品质 源于专业
Excellent Quality From Speciality



TROUBLESHOOTING

SYMPTOM	POSSIBLE REASONS	TROUBLESHOOTING
The electric/pneumatic motor stops running	<ul style="list-style-type: none"> • The motor current is overloaded (the motor cannot be actuated because its coil is burnt) • Whether the power is disconnected or the plug falls • Upper and lower couplings of the motor are worn out • The stator's inside coil is eroded by acid gases, resulting in failure of action • The power supply contact is poor • The power supply's protection switch contact is poor 	<ul style="list-style-type: none"> • Mount an overload protector at the power lead end (change the coil) • Check the power supply or fix the plug and the outlet again • Replace the coupling • Replace the inside coil • Replace the plug or the outlet to ensure secure connection • Overhaul the switch or replace it
The electric/pneumatic motor is overheated	<ul style="list-style-type: none"> • Whether the current is so high that the motor is overloaded in running • The motor's working voltage is not stable; please mount a voltage stabilizer or an overcurrent protection switch to prevent the motor from being overloaded and burnt • The motor's running is slow and heavy because of the liquid's too high viscosity and excessive specific gravity plus too big grains and an excessive content of grains 	<ul style="list-style-type: none"> • Find out reasons for overload; please mount a power supply voltage stabilizer and an overcurrent protection switch • Dilute the working medium's concentration, viscosity, specification or grain or replace it with another pump type
The liquid pump stops running suddenly after normal starting	<ul style="list-style-type: none"> • Whether it is jammed or has filth deposits • Please remove jams or filth and make sure of periodic checks • Whether there are any foreign matters inside the pump body and whether the filtering device fails or any other matters fall into the drum tank • Confirm whether the liquid temperature is too high and whether the material is applicable 	<ul style="list-style-type: none"> • Remove jams, filth or deposits • Please replace the sieve and the filtering element and remove impurities inside the pipeline and the tank • Reduce the working liquid's temperature or replace it with a pump type meeting and applying to the material of the working liquid
There are cracks on the liquid pump's body	<ul style="list-style-type: none"> • Confirm whether the pump body's flow-through material and the working liquid are applicable • The outlet and inlet pipelines are not fixed securely, resulting in vibrations during running; please fix such pipelines properly • And replace the damaged parts with new ones. 	<ul style="list-style-type: none"> • Replace it with a pump type fully meeting or applying the material of the working liquid • Fix the support for use of the liquid pump to reduce the amplitude and unnecessary vibrations as much as possible
The liquid pump cannot pump out any liquid (when the motor can run normally)	<ul style="list-style-type: none"> • Check whether the outlet and inlet pipelines are jammed by foreign matters or have filth deposits • Check whether the blades are jammed by foreign matters, worn out or seized • The inlet liquid level shall be about more than 3cm higher than the pump pipe base • Check whether any part of the liquid pump is loosened or damaged • Whether couplings of the motor or the pump pipe are worn out to result in idle running • Confirm whether the motor runs normally 	<ul style="list-style-type: none"> • Remove jams and filth at the liquid pump's inlet • Remove foreign matters on the impeller, like entanglements, and replace the impeller if damaged • Increase the liquid level • Check and tighten impellers, couplings, bushings and the like, and replace couplings if the parts are damaged • Check whether the connection is completely right and whether the carbon brush length is acceptable
There are violent vibrations and loud noise during running of the liquid pump	<ul style="list-style-type: none"> • The liquid pump is not fixed securely or installed properly so as to result in vibrations in running • Check whether the outlet and inlet pipelines are jammed by foreign matters or have filth deposits • The bearings are worn out or rusty after long-term operation of the liquid pump • The carbon brush is worn out after long-time service 	<ul style="list-style-type: none"> • Fix the support for use of the liquid pump, and check whether there is an excessive clearance between the main shaft and the bushing and whether the working liquid's viscosity or specific gravity exceeds the pump's application scope • Replace bearings, bushings and sleeves • Replace the carbon brush and even the carbon brush yoke
The liquid pump's pipe fittings leak	<ul style="list-style-type: none"> • The intermediate sleeve and the pipe shaft seat are worn out • The central shaft is worn out because of long-time service • Maybe the O-ring is worn out when the liquid discharge port leaks • The pump pipe is uncoupled • The couplings of the motor and the pump pipe are damaged 	<ul style="list-style-type: none"> • Replace the intermediate sleeve or the pipe shaft seat • Replace the central shaft, the bushing and the related sealing element • Replace the O-ring • Tighten the pump pipe (enhance the strength sealant when necessary) • Replace the couplings and check related parts
The pneumatic motor fails	<ul style="list-style-type: none"> • The gas supply is not started yet • The pneumatic motor's rotation speed is so low as to result in instability in full-load running • Overload results in damages to the blades, and the blades are worn out for long-time service 	<ul style="list-style-type: none"> • Start the gas supply • The pneumatic pressure is inadequate, so it's necessary to increase the gas supply pressure and the gas supply • Replace the blades or the pneumatic motor



If the fault reasons are uncertain, please cut off the power (gas) supply immediately and notify your distributor for further check.

气动插桶泵系列

Pneumatic Drum Pump Series

卓越品质 源于专业
Excellent Quality From Speciality



使用注意事项

打开油桶灌装孔盖，将本插桶泵插入并拧紧。输入油管一端固定在插桶泵的出液接头上，另一端接盛液容器。

将减压阀调节旋钮退出锁紧位置（即向后退出）将气管接上本插桶泵的进气接头夹紧。

打开空压机出气阀门（或管路气阀），使压缩气经气管、球阀、减压阀进入油桶，同时调整减压阀压力。即转动调节旋钮，逆时针压力减小，顺时针压力增大，使减压阀的压力表指针在0.015~0.025MPa之间，然后将调节旋钮锁紧（即向前推进），桶内液体即被抽出。

NOTES FOR USE

Open the oil drum filling hole cover, insert the drum pump and screw down. Fix one end of the input oil pipe on the drum pump's liquid discharge joint and connect the other end to the liquid container.

Withdraw the pressure reducing valve's adjusting knob out of the locking position (namely backwards), connect the gas pipe to the drum pump's gas inlet joint and clamp it.

Open the air compressor's air outlet valve (or the pipeline's air valve) to make the compressed gas go through the gas pipe, the ball valve and the pressure reducing valve and into the oil drum; meanwhile adjust the pressure reducing valve's pressure, that is, turn the adjusting knob, counterclockwise to reduce the pressure and clockwise to increase it, to make the pressure reducing valve's pressure gauge pointer stay within 0.015~0.025MPa, and then lock the adjusting knob (namely push ahead) to pump out the liquid inside the drum.

使用范围

本气动插桶泵以压缩空气为动力，用以抽取各种桶装容器内液体，特别适合于易燃易爆挥发性很强的油类、溶剂，具有轻巧方便，抽取速度快，安全可靠的液体抽取功能。

APPLICATION SCOPE

This pneumatic drum pump is powered by compressed air to pump different kinds of liquids inside drummed containers, especially suitable for pumping oil or solvents being inflammable, explosive or very volatile, featured by being light, easy, fast, safe and reliable in pumping liquids.

基本参数 BASIC PARAMETERS

型号 Model	ZQY-25	ZQY-40
气源压力 Air supply pressure	$\geq 0.10\text{MPa}$	
桶内工作压力 Working pressure inside drum	$\leq 0.025\text{MPa}$	
安全阀工作压力 Working pressure of safety valve	0.03MPa	
气管内径 Inner diameter of air pipe	f8mm	
进出外径 Inlet/outlet outer diameter	25mm	40mm



气动插桶泵系列

Pneumatic Drum Pump Series

卓越品质 源于专业
Excellent Quality From Specialty



安全注意事项

由于本产品采用气压式原理，桶内必须充入压缩空气，液体才能被抽出，压力越高抽取速度越快，但须注意桶体的耐压程度，压力过高会造成桶体爆裂，故使用气动插桶泵必须严格遵守下列各项要求，以确保安全。

1、使用本插桶泵的储液桶耐压必须高于本插桶泵的工作压力3倍。

2、使用前应检查安全阀是否灵活（可拉动扣环进行检查），使用中减压阀压力达到0.03MPa时安全阀应工作（即小孔应放气），如有异常应停止使用并检修。

3、使用时应严格按本说明书，“使用注意事项”步骤操作，特别注意减压阀压力表指针不得大于0.025MPa，不得发生意外。如压力偏高应及时逆时针方向转动减压阀调节旋钮，或拉动安全阀扣环使压力下降。

4、使用时不得随意敲打本插桶泵，以免漏气或减压阀失灵，安全阀失控造成意外。

5、压力表应按计量要求定期检定。

SAFETY NOTES

The product adopts a pneumatic pressure principle: the liquid inside the drum cannot be pumped out unless compressed air is filled into the drum; and the higher the pressure is, the faster pumping will be; but it's necessary to pay attention to the drum body's pressure withstanding degree: overpressure may result in the drum body's blowout, so the following requirements must be followed strictly in using a pneumatic drum pump to ensure safety.

1. A liquid storage drum using this drum pump must be able to withstand a pressure 3 times of the drum pump's working pressure.

2. Before use, it's necessary to check whether the safety valve is flexible (check it by means of pulling the snap ring), and the safety valve shall work (that is, air shall be released from the small hole) when the pressure reducing valve's pressure gauge reaches 0.03MPa in use; in case of abnormalities, it's necessary to stop using and overhaul it.

3. It's necessary to follow "Notes for Use" in the manual strictly in operating the pump. In particular it's necessary to note that the pressure reducing valve's pressure gauge pointer is not higher than 0.025MPa to avoid accidents. If the pressure is too high, it's necessary to rotate the pressure reducing valve's adjusting knob counterclockwise promptly or pull the safety valve's snap ring to reduce the pressure.

4. Don't knock the drum pump freely during operation to avoid accidents caused by air leak, failure of the pressure reducing valve or loss of control of the safety valve.

5. The pressure gauge shall be calibrated on a regular basis in accordance with measuring requirements.

产品概况

气动浆料泵是一种气动式柱塞泵，可用于任何流体输送、注入和抽空。适用于高低浓度的液体输送，具有耐高温、耐腐蚀、防沉淀、低噪音、节能等特点。是理想的移动输送设备。

PRODUCT INTRODUCTION

The pneumatic slurry pump is a pneumatic plunger pump, which can be used to transport, infuse and exhaust any fluids. It's applicable for transporting liquids with a low or high concentration and featured by its resistance to high temperature, corrosion and sedimentation, low noise, energy saving and so on. It's an ideal movable transportation device.

产品用途

气动浆料泵应用于人造革、移膜革、压延革、彩涂板、印染、医药、涂层、化工、纺织、油漆、涂料、喷漆、喷涂、油体输送、薄膜镀铝、彩钢瓦等行业。适用于高粘度（VIS）12万CPS/25℃的化工浆料输送，非常适合于黏稠性液体、腐蚀性液体、含有固体颗粒或气体气泡的液体输送。

APPLICATION

The pneumatic slurry pump is applied in such industries as artificial leather, transfer coating leather, calendering leather, color coated sheets, printing and dyeing, medicine, coating, chemical engineering, textiles, oil paint, dope, spray lacquer, spray coating, oil transportation, film aluminium plating and color steel tiles. It's applicable for transporting chemical slurry with high viscosity up to 120,000 CPS/25℃, especially for transporting viscous or corrosive liquids or those containing solid particles, gases or air bubbles.

气动插桶泵系列

Pneumatic Drum Pump Series

卓越品质 源于专业
Excellent Quality From Speciality



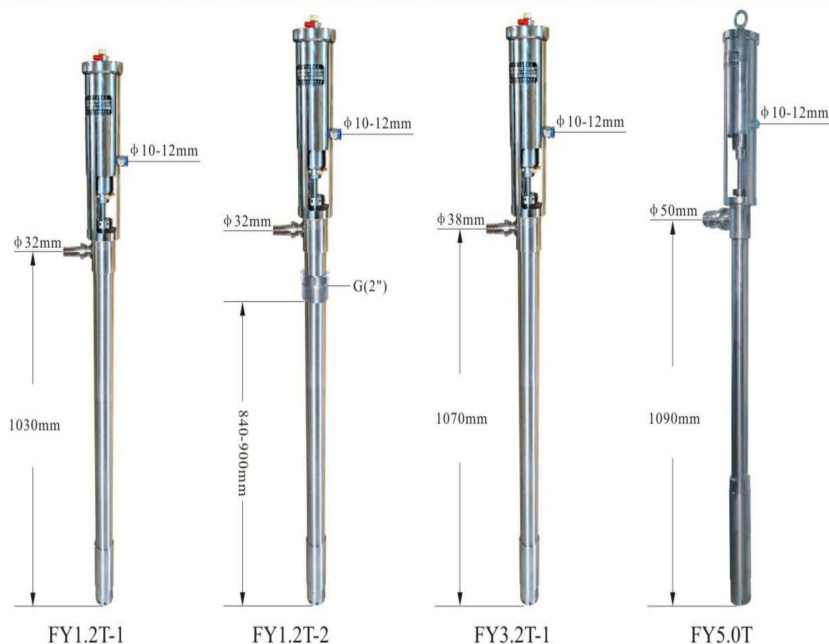
结构和工作原理

气动浆料泵采用气压差的作用，使活塞上下运行，带动导料活塞开闭，起到提料的作用。调整给气动浆料泵工作气体的流量与气压来控制调节气动浆料泵送料流量。结合感应开关能使之自动化工作。使用方法1. 先将导料管正确放入所要输送的料桶内。2. 将耐腐蚀软管连接出料口接至送料地点。3. 进气阀呈关闭状态，然后将气源管连接进气阀接头，根据所需浆料流量来开启进气阀调节气动浆料泵运行频率，即可工作。维护保养1. 气动浆料泵在使用过程中防止撞击缸体部位避免变形，发生活塞卡死现象，造成报废。2. 活塞在运行壹佰万余次后，根据空压机送气过程中水份积留情况应清缸体，涂注30#润滑油。如长期不用，应在溶剂内工作状清洗，防止浆料冻结，阻塞导料管。注意事项1. 在工作中，如缸体部位发热（以手感热为准），应立即加注或更换30#润滑油。2. 使用过程中如调节螺母密封磨损松动，发生漏料，应及时调整螺母或更换4F调节密封垫。

STRUCTURE AND WORKING PRINCIPLE

The pneumatic slurry pump makes the piston move up and down through the action of a pneumatic pressure difference, thus driving the material guide piston to open or close to lift up the material. The pneumatic slurry pump's feeding flow can be controlled and adjusted by means of adjusting its working gas flow and pneumatic pressure. When combined with an inductive switch, it's available for automatic work. Operating Method: 1. First put the material guide pipe into the transported drum correctly. 2. Connect the corrosion-resistance hose's connecting discharge port to the feeding point. 3. Make sure the air inlet valve is in the off state, then connect the air supply pipe to the air inlet valve joint, open the air inlet valve and adjust the pneumatic slurry pump's running frequency as required by the slurry flow, and the pump can work at once. Maintenance: 1. In using the pneumatic slurry pump, the cylinder part shall be avoided from being knocked and deformed, which may lead to seizure of the piston and further to rejection. 2. After the piston has run for more than 1 million times, the cylinder shall be cleaned in accordance with water accumulation in the process of air supply of the air compressor, and 30# lubricating oil shall be applied. To be idle for long, it's necessary to clean it with a solvent to prevent slurry from being frozen and blocking the material guide pipe. Notes: 1. If the cylinder part is heated (when your hand feels hot) in running, it's necessary to fill or replace 30# lubricating oil. 2. If the adjusting nut seal is worn out or loose in running to result in leakage, it's necessary to adjust the nut or replace the 4F adjusting sealing gasket promptly.

产品外形及尺寸图 PRODUCT APPEARANCE AND DIMENSION DIAGRAM



气动插桶泵系列

Pneumatic Drum Pump Series

卓越品质 源于专业 Excellent Quality From Speciality



主要性能参数 Main Performance Parameters

型号 Type	ZQY-0.8	ZQY-1.2-1	ZQY-1.2-2	ZQY-3.2-1	ZQY-3.2-2	ZQY-5.0
外型尺寸(mm) Overall dimensions (mm)	100×1380	100×1450	100×1400	120×1600	120×1500	150×1680
重量(kg) Weight (kg)	14	16	15	23	19	37
流量(m³/h) Flow (m³/h)	0.8	1.2	1.2	3.2	3.2	5
通过颗粒(mm) Passing grain (mm)	f1.2	f1.2	f1.2	f3	f1.2	f5
扬程(m) Lift head (m)	0-100	0-100	0-100	0-100	0-100	0-100
进出口径(mm) Inlet/outlet diameter (mm)	51/32	60/32	55/32	72/38	57/32	88/50
出料接口(in) Discharge interface (in)	1 1/4"	1 1/4"	1 1/4"	1 1/2"	1 1/2"	2"
供气接口(in) Air supply interface (in)	3/8	3/8	3/8	3/8	3/8	3/8
供气压力(MPa) Air supply pressure (Mpa)	0.3-1.0	0.3-1.0	0.3-1.0	0.3-1.0	0.3-1.0	0.3-1.0
出料压力(MPa) Discharge pressure (Mpa)	3-10	3-10	3-10	3-10	3-10	3-10
气缸压力比 Cylinder pressure ratio	2 : 1	2 : 1	2 : 1	3 : 1	4 : 1	3 : 1
耗气量(m³/min) Air consumption (m³/min)	0.3-1.0	0.3-1.0	0.3-1.0	0.3-1.0	0.3-1.0	0.3-1.0

可定制各种形式进出口及泵管长度尺寸 Available for customization of different forms of inlets and outlets and pump pipe length dimensions

结构示意图 STRUCTURE DIAGRAM

	序号 NO.	名称 Mena	序号 NO.	名称 Mena
	1	上弹簧 Upper spring	12	钢球 Steel ball
	2	排气口 Vent	13	进料阀 Feed valve
	3	换气口 Air switching port	14	钢球 Steel ball
	4	密封底座 Sealing base	15	导料缸体 Material guide cylinder body
	5	气缸 Cylinder	16	导料管 Material guide pipe
	6	下弹簧 Lower spring	17	出料口 Discharge port
	7	进气口 Air inlet	18	活塞杆 Piston rod
	8	调节螺母 Adjusting nut	19	进气接头 Air inlet joint
	9	连接部位 Connecting part	20	活塞 Piston
	10	连接拉杆 Connecting tension bar	21	密封盖 Sealing cover
	11	导料总成 Material guide assembly	22	加油阀 Oil filling valve

直流加油泵系列

DC Gasoline Pump Series

卓越品质 源于专业
Excellent Quality From Speciality



简介 Introduction

电动加油泵是一种小型叶片泵。电机的输出轴与叶片泵的主轴相连，内置旁通保护阀，并经过严格的耐温抗震性能测试。具有体积小、重量轻、携带方便、品质优良、工作稳定等特点。利用车载电瓶或家用电，快速抽吸柴油等液体，具有显著的社会效益。适合在基地或场站，用于地面车辆加油及野外工地加油、小批量卸油及输转油料。

The electric gasoline pump is a small-size vane pump. The motor's output shaft is connected to the vane pump's main shaft, with a built-in by-pass protection valve, and it has passed strict tests of resistance to temperature and vibration. It's characterized by its compactness, light weight, portability, high quality, stable operation and so on. When utilizing a carborne storage battery or mains supply, it can pump such liquids as diesel oil rapidly, so it has noticeable social benefits. It's applicable for oiling of surface cars at bases or terminal yards, and oiling, small-batch oil discharge and oil transfer at field sites.



技术参数

电压 Voltage	口径 Diameter	介质 Medium	流量 Flow	吸程 Suction lift	扬程 Lift head	功率 Power	压力 Pressure
DC12V	G3/4	柴油、煤油 Diesel/kerosene oil	40L/min	4~5M	10M	160W	0.2Mpa
DC24V	G3/4	柴油、煤油 Diesel/kerosene oil	40L/min	4~5M	10M	160W	0.2Mpa
AC220V	G3/4	柴油、煤油 Diesel/kerosene oil	40L/min	2~4M	5M	120W	0.2Mpa
DC12V	G1	柴油、煤油 Diesel/kerosene oil	60L/min	4~5M	10M	370W	0.25Mpa
DC24V	G1	柴油、煤油 Diesel/kerosene oil	80L/min	4~5M	10M	370W	0.25Mpa
DC12V	G1	柴油、煤油 Diesel/kerosene oil	60L/min	4~5M	10M	550W	0.3Mpa
DC24V	G1	柴油、煤油 Diesel/kerosene oil	60L/min	4~5M	10M	550W	0.3Mpa
AC220V	G1	柴油、煤油 Diesel/kerosene oil	60L/min	4~5M	10M	550W	0.3Mpa



使用注意事项

1、使用前应确认电源是否与标注电源相符。

2、电压允差 $\pm 5\%$ ，直流电源12V或24V注意+、-极。

3、油泵初次使用时，应在泵头内加少许被抽液体以增加吸力，进出油管按箭头所示。

4、进油管和接头绝对不能漏气，以保证吸程。必须安装配套的带过滤网底阀。

注：本泵严禁输送易燃、易爆及腐蚀性液体

NOTES FOR USE

1. Before use, it's necessary to confirm whether the power supply conforms to the indicated power supply.

2. The allowable error of voltage is $\pm 5\%$; the DC supply is 12V or 24V; and pay attention to poles + and -.

3. For the first use of the oil pump, it's necessary to fill a bit of the pumped liquid into the pump head to increase the suction, and follow the arrow head indications for the oil inlet and outlet pipes.

4. The oil inlet pipe and the joint shall be kept from air leak absolutely to ensure the suction lift. It's necessary to mount a related bottom valve with a filter screen.

Note: The pump is strictly prohibited from transporting inflammable, explosive or corrosive liquids.

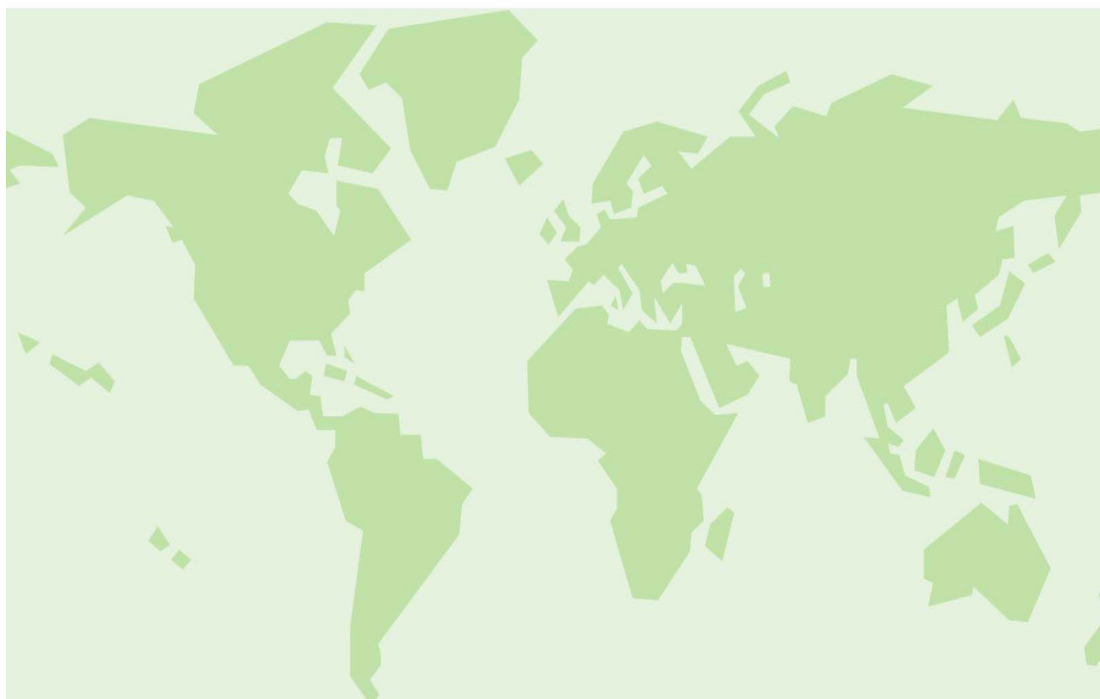
常见故障及排除方法 COMMON FAULTS AND REMOVAL METHODS

故障 Symptom	原因 Reasons	处理方法 Removal method
不出油 Oil cannot be pumped out	1、+、-极反接 1. Connection of the poles + and - is reverse	1、正确接好+、-极 1. Connect the poles + and - correctly
	2、进出管路漏气 2. The inlet/outlet pipeline leaks	2、接好进油管路，锁紧管锁 2. Connect the oil inlet pipeline properly and lock the pipe lock
	3、启动前未加少许被抽油液 3. No pumped oil is filled slightly before starting	3、加少许被抽的油液 3. Fill a bit of pumped oil
出油量少 Oil output is small	1、电源电压偏低 1. The supply voltage is too low	1、提高电源电压，但不能超过电压允差 1. Increase the supply voltage but not beyond the allowable error of voltage
	2、吸、扬程超标 2. The suction lift or the lift head is unacceptable	2、调整好吸、扬程 2. Adjust the suction lift or the lift head properly
	3、进油过滤网有异物阻塞 3. The oil inlet filter screen is jammed by foreign matters	3、清除异物 3. Remove foreign matters
	4、叶片磨损 4. The vane is worn out	4、更换叶片 4. Replace the vane

本公司保留产品设计改进权，如有变动，恕不另行通知。
Our company reserves the right of improving the product design and changes it without notice.

插桶泵 / 抽液泵 / 浆料泵 / 直流加油泵

Drum pump / liquid pump / slurry pump / DC gasoline pump



上海新光明泵业制造有限公司

地址：上海市武定路576号

邮编：200000

电话：021-62156413 62586878 62583382

网址：www.gmpumps.com

邮箱：1010760662@qq.com